



AMIGOS DEL PARQUE LYNNBROOK **LYNNBROOK PARK** FRIENDS OF LYNNBROOK PARK

***COMMUNITY DESIGN SKETCHBOOK***

1 March 2019

*Josiah Golson Civic Arts*

This work was commissioned by the Trust for Public Land, with grant funding from the National Endowment for the Arts.

**Josiah Golson Civic Arts**

Josiah Golson  
Mary Ann Twitty  
Daniela Peterson  
Roy Wroth

**Trust for Public Land**

Jenny Park, Tennessee State Director  
David Johnson, Chattanooga Program Director  
Daniela Peterson, Creative Placemaking Fellow

**With Thanks To**

Marie Mott  
A.J. and Ebony Sanford

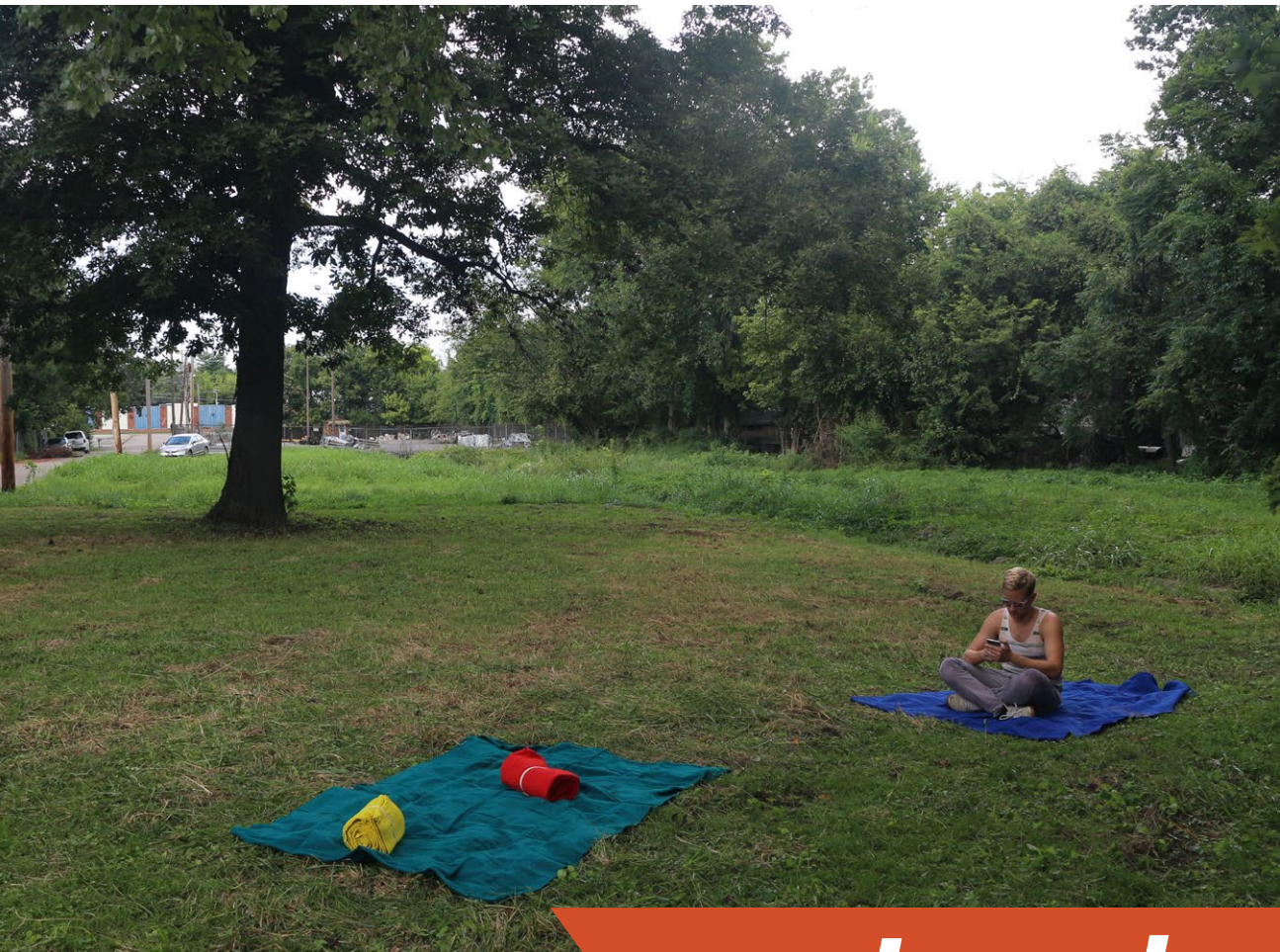
# ***COMMUNITY DESIGN SKETCHBOOK***

*Josiah Golson Civic Arts*



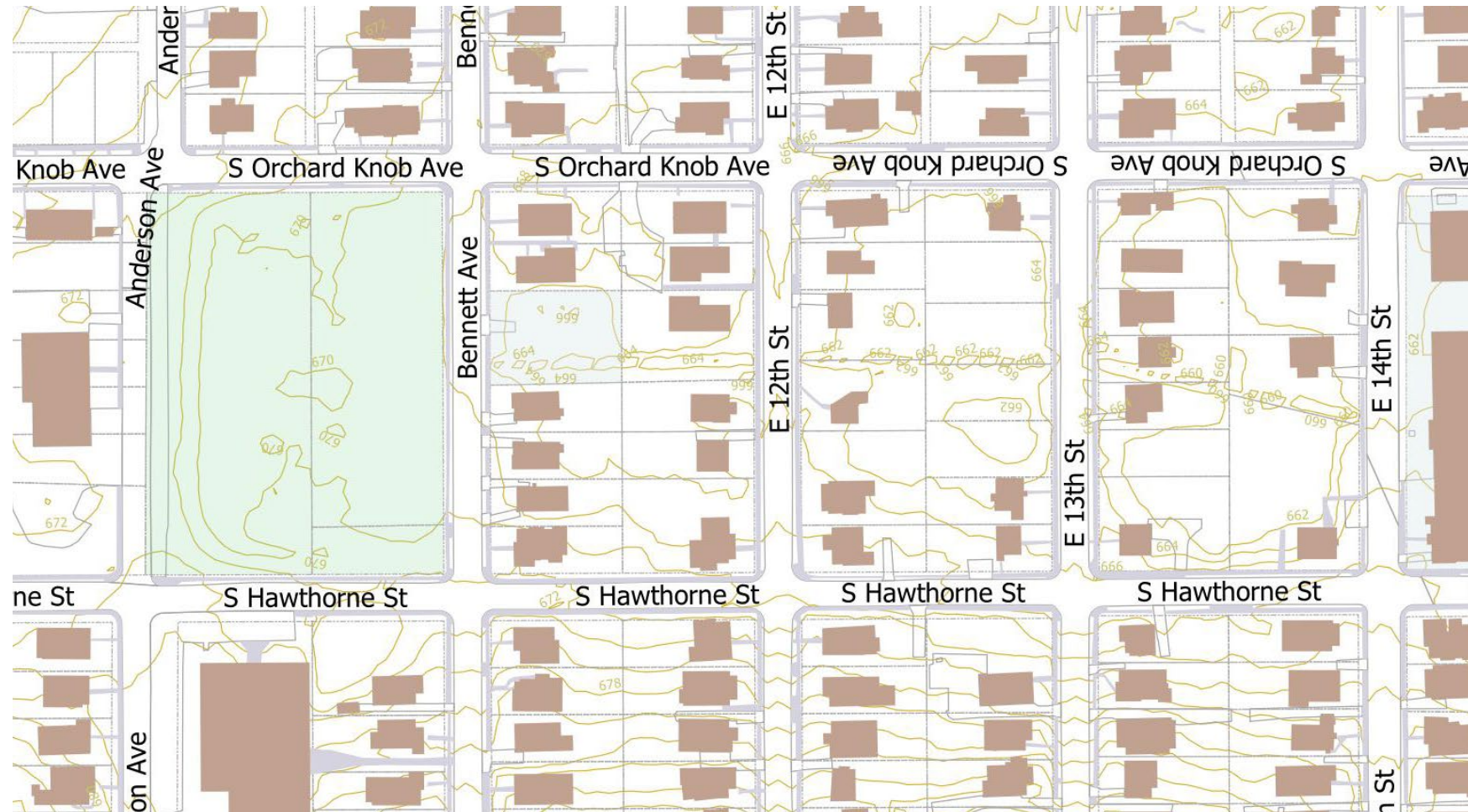




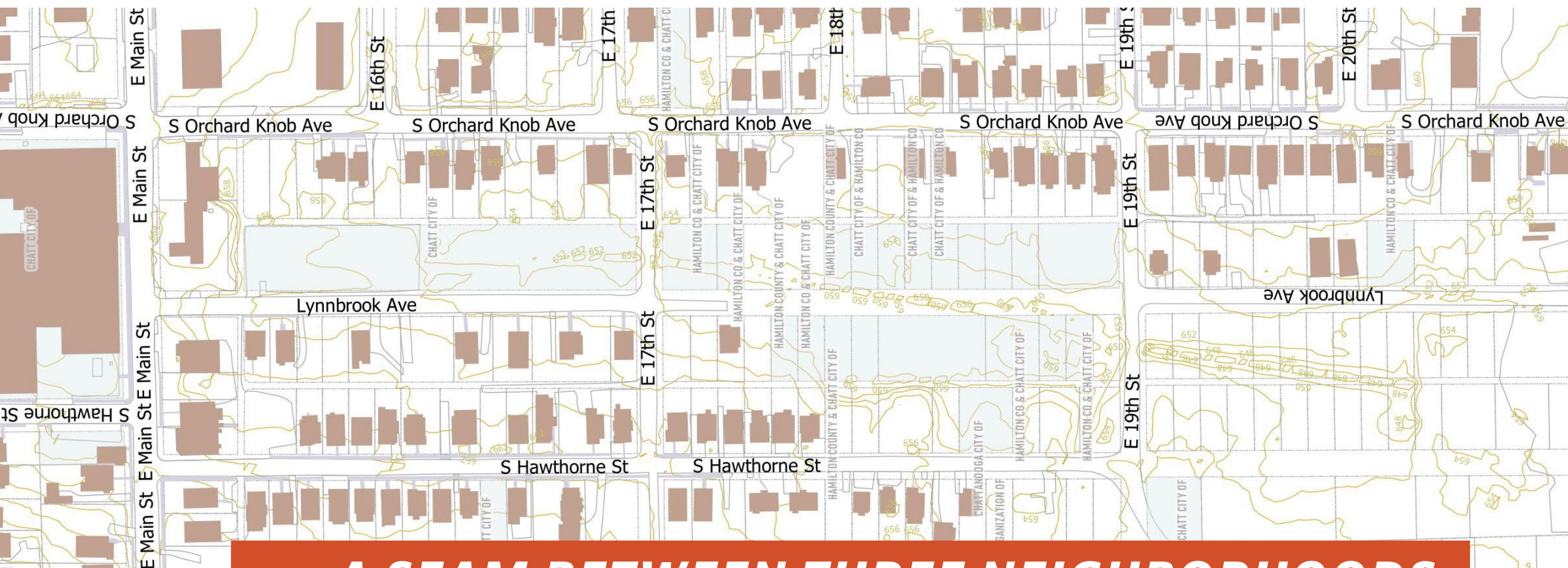


# ***Lynnbrook Open Space***

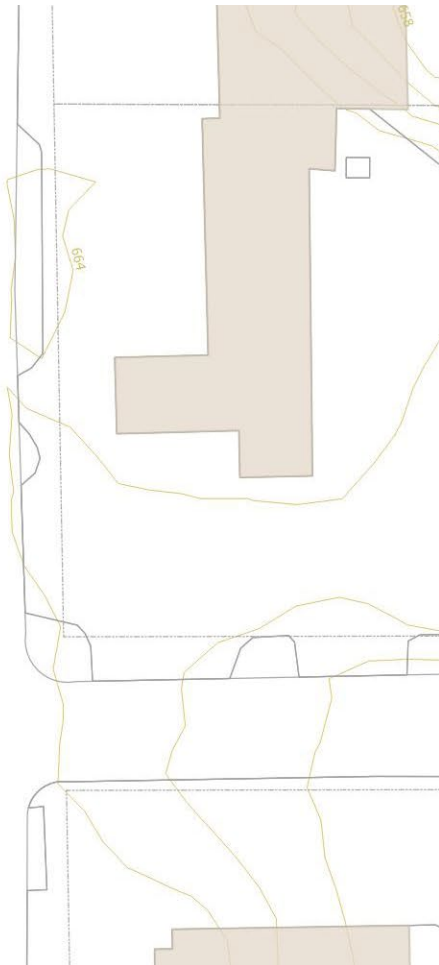




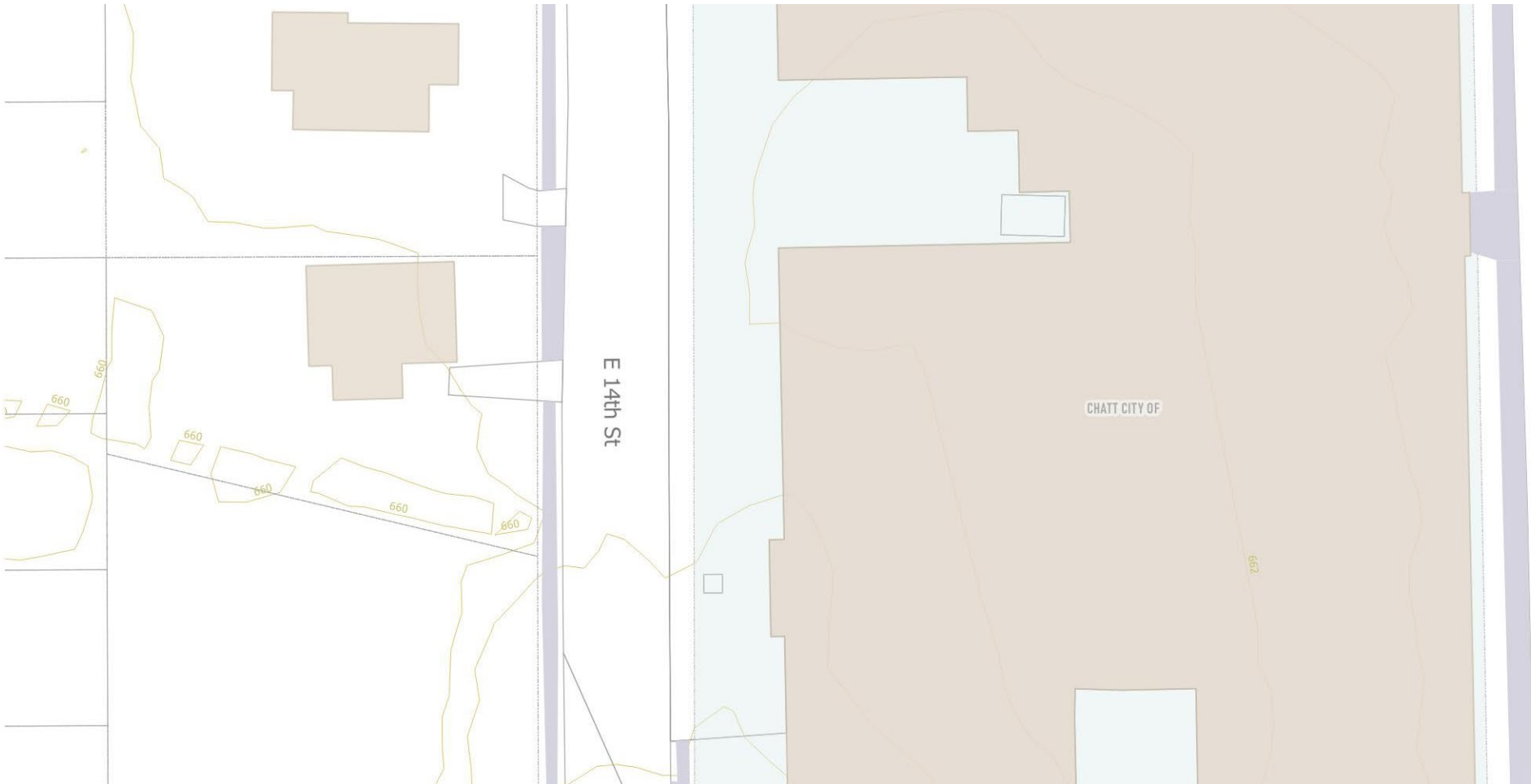




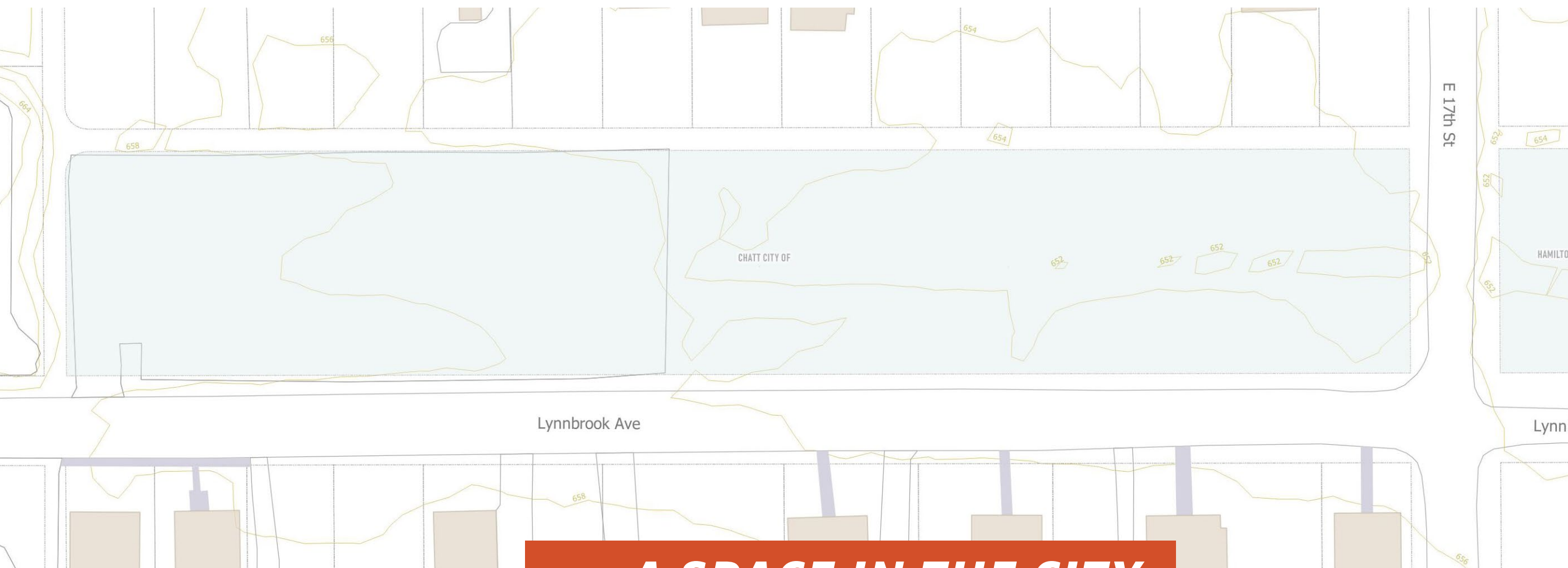
***A SEAM BETWEEN THREE NEIGHBORHOODS***



E Main St





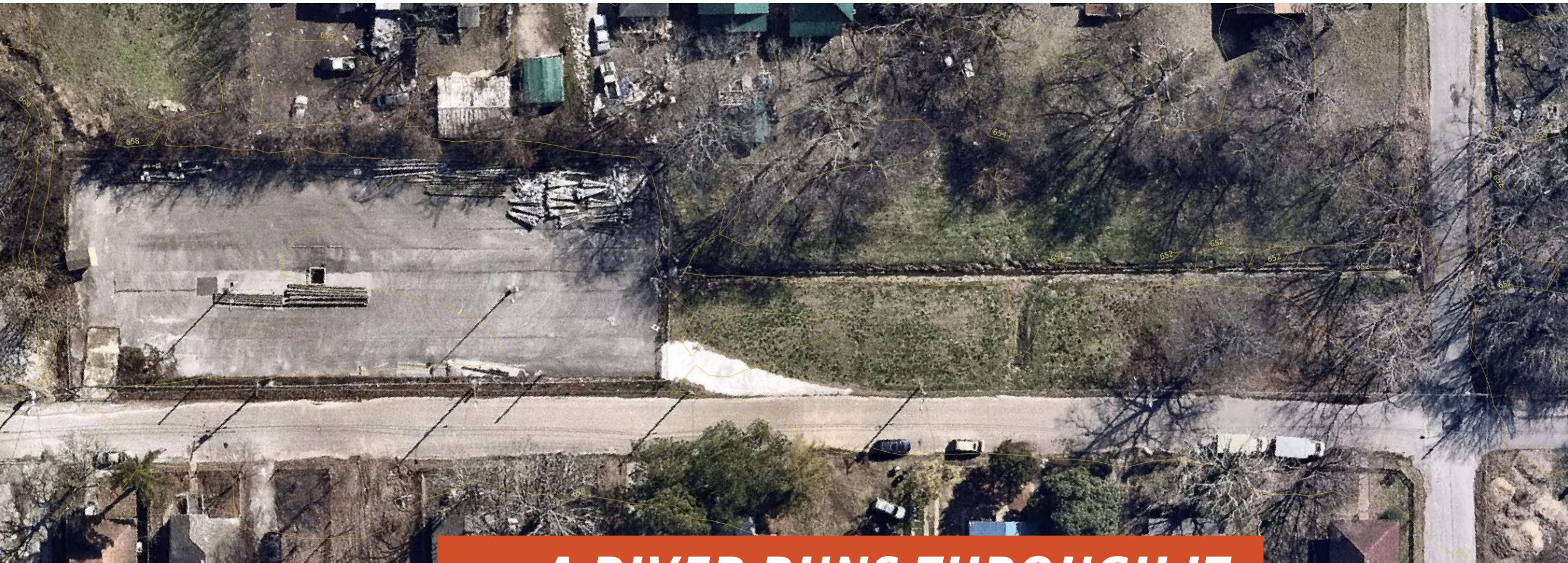


***A SPACE IN THE CITY***









***A RIVER RUNS THROUGH IT***



***"In my artistic practice, I seek to express the civic notions of community through visual and cultural means that are accessible and interactive with a diverse public audience."***

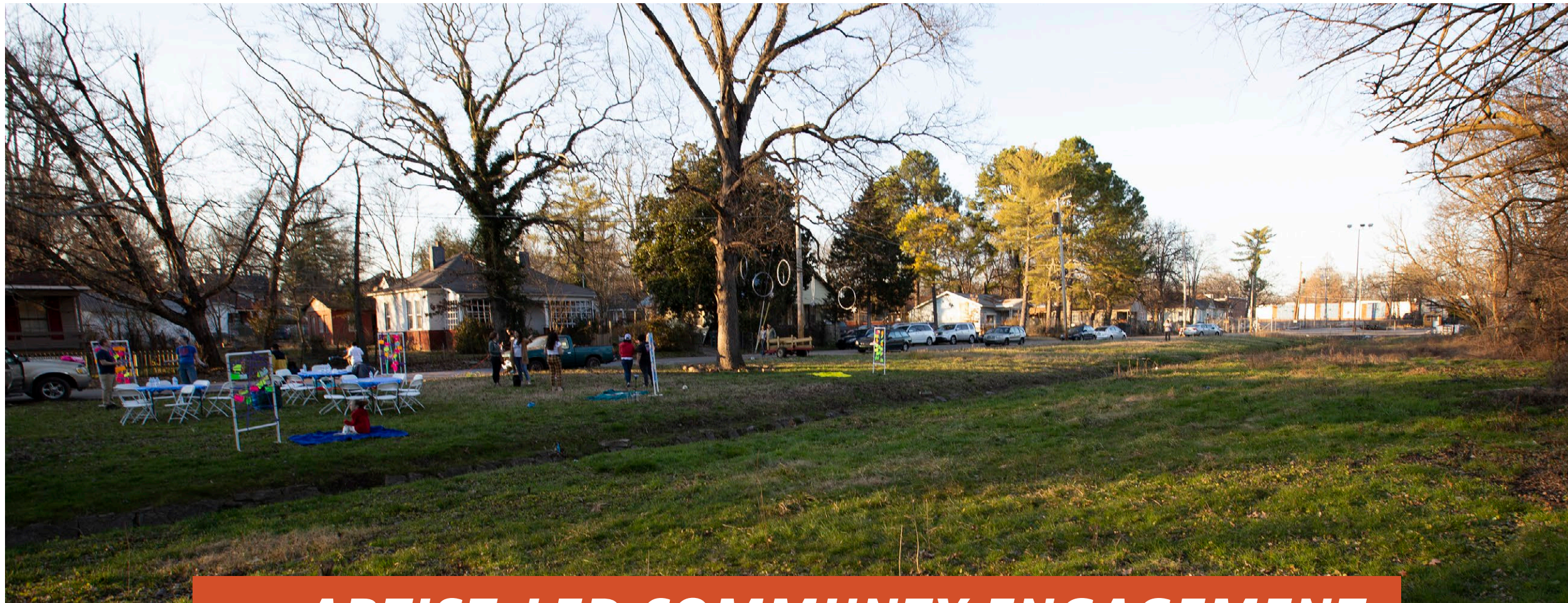
***"... facilitating safe spaces in which individuals from the community can comfortably express themselves..."***

***"I approach community engagement with the belief that its process should genuinely reflect the culture of the community that I am serving."***

Josiah Golson, Lead Artist







## ***ARTIST-LED COMMUNITY ENGAGEMENT***

### ***Our Process***

Our team's creative process includes research, documentation, and storytelling.

Through canvassing the community, we learn how residents occupy and activate individual and shared spaces (such as bus stops, restaurants, etc)

and what life, gatherings, culture, and play look like in these spaces.

Our team produces unique culturally-oriented workshops that allow residents to engage and express their memories and visions of parks and shared spaces.

The workshops inspire conversational, visual, and theatrical exercises that invite participants to imagine a park as a continuation of their memories.



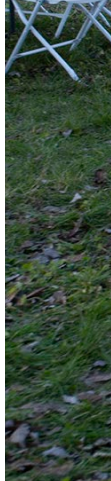
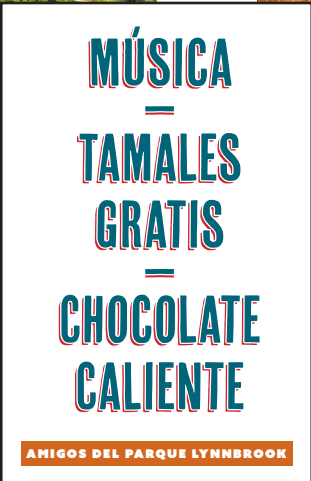
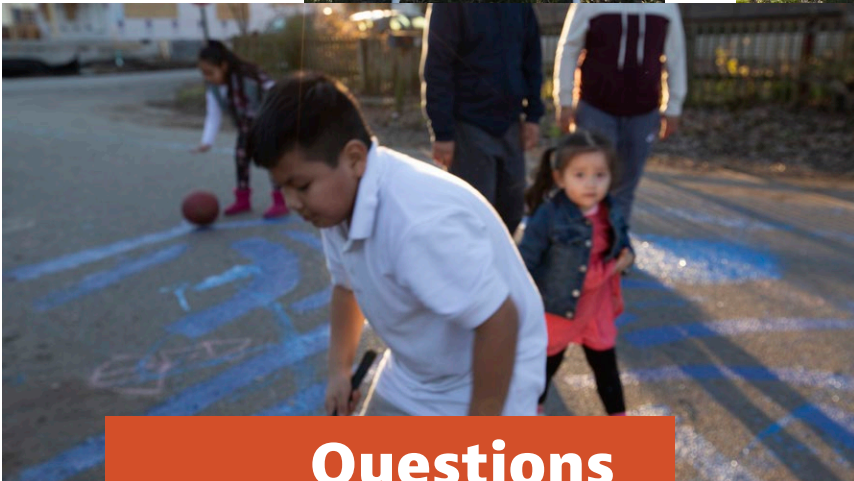
Water/Landscaping

"How could We make the Water a part of this Place?"  
"Como podriamos hacer que el aqua sea parte de este lugar?"  
"What could We do with the creek to make it Safe? Fun? Beautiful?"

"Que podemos hacer con el viachuelo para que sea seguro? Lindo? divertido?"  
"Could You see a Garden here? What might it look like?"  
"Ves un jardin aqui? Como se vevia?"

Safety  
"What would make this place Safe for You? For kids?"  
"Como podriamos hacer este espacio seguro para ti y tu familia?"  
"What do these streets need to be safe for You?"

"Que necesitan las calles para ser seguras?"  
"What would make this a Safe Place when it's a Park?"



Questions

See page 23 for Responses.

photo credits: Mary Ann Twitty and Jordan Berger

Food

"How do You eat outside?"  
"Como come al aire libre?"  
"What kind of food do You eat outside?"  
"Que tipo de comida come cuando esta al aire libre?"

"What do You need here to cook on this space?"  
"Que necesita para cocinar en este espacio?"  
Performance  
"What would You want to Perform here?"  
"Que tipo de show te gustaria ver aqui?"

"What kinds of Music do You play Outside?"  
"Que tipo de musica te gustaria escuchar aqui?"  
"Would You put a Stage here? What would happen there?"  
"Te gustaria poner un escenario aqui?" "Que te gustaria que pasara en el escenario?"

Play  
"Where on this Space would You Play?"  
"Donde jugarias en este lugar?"  
"What do You want to Play here?"  
"What would a Playground look like here?"  
"Como seria un playground para este lugar?"





## ***Fiesta Lynnbrook***

***In our culminating Fiesta*** for the Lynnbrook park space, the theme of water permeated the feedback in input ranging from safety to performance events. Through our set-up of input stations, Fiesta attendants and participants provided their perspectives on what the park space needed to provide visitors to be safe, play, enjoy food, host events and performances, and enjoy the space with its considerable aquatic elements.

Residents and participants expressed their concern with flooding in the park space, as our team has witnessed and navigated in our planning and programming throughout the engagement process. Building a sustainable playground or maintaining safe open spaces for sports and games depends upon making a plan that addresses issues with flooding and the water-system that has been referred to as a "ditch," "river," and "canal" by residents. Informed by

the feedback regarding water throughout the process, we focused specifically on water and landscaping for the Fiesta and asked how we could make water a part of the space and what we could do for safety, beauty, and fun. Participants proposed a number of ideas, especially bridges, lighting of pathways, drainage, and potentially covering up the surface of the water system, while somehow making it operate from underground.



*"¿ Will you help us dream a future park ?"*



**Responses**

A farmer's market  
Music  
Flowers  
Agua  
Shelter

Native plants  
Park Ambassadors  
Frogs  
Dog park  
Benches

*photo credits: Mary Ann Twitty*





# A View From Above

**At the “Sculptures in the Sky” Kite Festival**, our team engaged a numbers of visitors (including people living near Lynnbrook, those familiar with the space, and those likely to visit the space as a park in the future). Our activity, which provided participants with an aerial perspective of the park space, gathered a great deal of input and feedback which imagined the potential for the aquatic elements of the space and how it might be used to develop and sustain the landscape and beautification of the park.

While contemplating the layout of the park space and the water system in its current state, those familiar with the space and potential visitors imagined an intentional focus on aquatic features and eco-friendly and native plants which could benefit from the aquatic features on the space. Participants who would be “neighbors” to the park space identified the opportunity for a pool or designed pond, and also proposed gardening and wildlife space specifically compatible with the aquatic elements. A unique

suggestion that was discussed and recorded at this engagement was to have people at the park who could facilitate connections among park visitors who may use the space but not realize the full benefit of sharing it together as community. This concept also inspired our thinking as to how the element of water may play into such facilitation and development of community and connectedness in the park.





photo credits: Mary Ann Twitty





# Memories of Play

In the effort to inspire design input from residents' memories and past experiences with parks, our team engaged in activities and conversations inviting participants to imagine their park experiences projected in the Lynnbrook space. How could a park in Lynnbrook reflect and honor the parks and public spaces known by its community? Residents not only

shared their memories of parks from outside the state and country, but also spoke to experiences of recreation on the Lynnbrook space throughout the past three decades.

The input on the design of the park, informed by memories of walk-able bridges, protective fences, and open spaces, emerged with the theme of navigating

the presence of water on the site. Participants imagined the park space as a place that could spark the imaginations of playful children, guardians, and visitors of all ages, while providing them safety and co-existence with the water system in the pursuit of play.



***“¿ What do You love to eat ?”***

***“¿ Where besides home do You love to eat ?”***

***“¿ With Whom do You love to eat ?”***

***“¿ Where do You love to play ?”***



photo credits: Mary Ann Twitty

**Responses**

**What do You love to eat:**

**With Whom do You love to eat:**

**Where besides home do You love to eat:**

**Where do You love to play:**

- Tacos
- Pizza
- Pupusas

- Family
- Friends
- Partner

- Inside
- San Marcos
- Chili's
- Steakhouse

- Cici's Pizza
- Open field
- Community Pie
- Outskirts

- Park
- Playgrounds
- Outside (front yard)
- Countryside





## Design Over Dinner

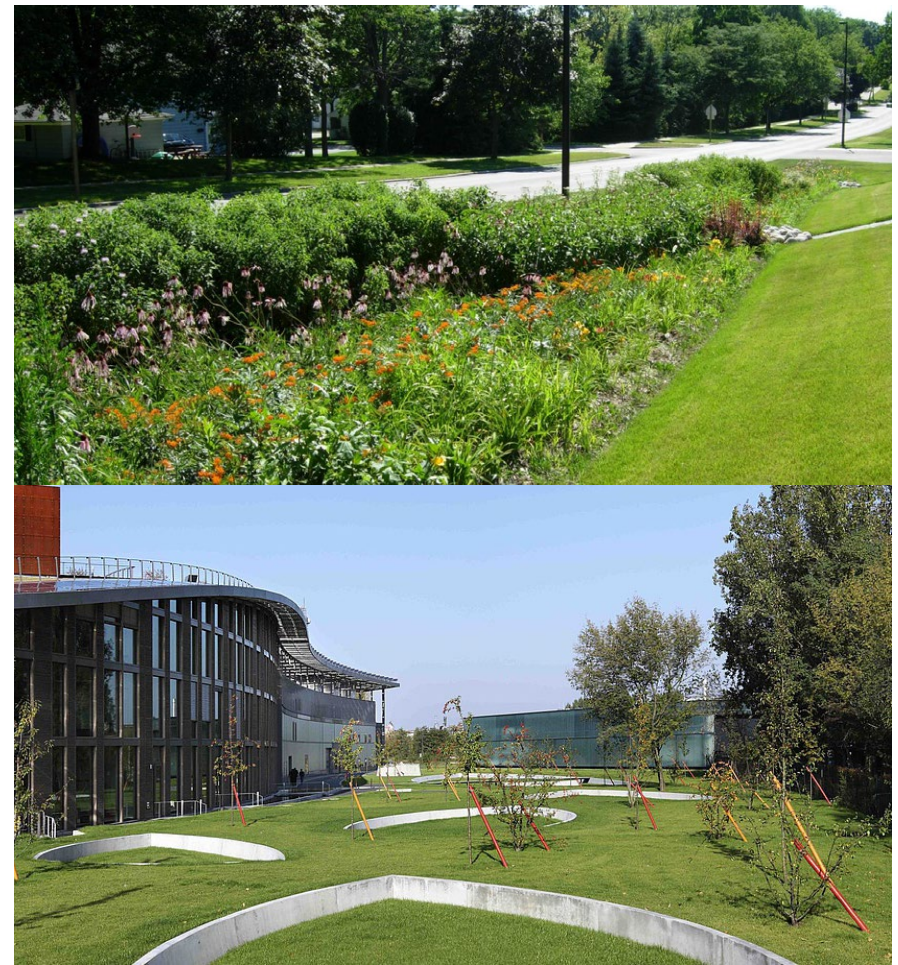
Our team's first engagement with the Lynnbrook space and community invited residents to offer input on the needs of the space while dining over pupusas by a local vendor. Through a participatory painting project, we invited residents of all ages to envision, illustrate, symbolize, and write the things and activities that they enjoy in outdoor spaces. Throughout the engagement, we

explored the freshly mowed Lynnbrook space to inspire contemplation and conversation of how this space could fully realized as a park.

It was clear from the outset that the storm water system and creek would be a major theme to address in our engagement, process, and proposed design for the park. Yet having the initial access to the space along

with residents and visitors, and to physically explore the space and contemplate it's safety issues and features, while finding opportunities to discuss their history with recent and long-term residents, made clear the need to address the water in the park space as a major theme with implications for the natural, communal, and architectural elements of the park.









## ***'WATER' EMERGES AS CENTRAL THEME***

Throughout our engagements with the communities of the Lynnbrook space, water has been a consistent theme in residents' feedback, input, and imagination. When contemplating the community's desires and dynamics for a park design, members of our team have asked the question, "what is the glue holding the people of this space together?" In what way could the park space design recognize, honor, and sustain the local element or elements that best unify the residents we intend for the park to serve today and in the future? This inquiry

has brought us to the idea of the water as the glue and medium through which to develop the friends and character of Lynnbrook Park.

In the course of our engagement, we've identified residents' ideas for using the space's relationship to water as a driving theme of design, improvement, and recreation. As a theme of water has emerged in our data, so should it be reflected throughout the park's development and programming as led by the artists' team and Placemaking Fellow. Our team envisions a

water-based structure as an opportunity to inspire the theme in the design and to involve the community in a creative studio-like method on the space.

Specifically, the water-themed concept might be a "water wheel," which could operate on or near the stormwater system in the space. To develop it as a permanent structure, a simpler design and piece could exist and be created by participants from the community.



## 1. Food

### 1.1. "How do You eat outside?"/ "Como come al aire libre?"

- 1.1.1. Blankets
- 1.1.2. Celebrar cupleanos (Birthday Celebrations)
- 1.1.3. Food truck

### 1.2. "What kind of food do You eat outside?" / "Que tipo de comida come cuando esta al aire libre?"

- 1.2.1. Hot dogs - 5
- 1.2.2. Burgers - 3
- 1.2.3. Sandwiches
- 1.2.4. Bottled Water - 2
- 1.2.5. Grilled chicken - 2
- 1.2.6. Beef 3
- 1.2.7. Corn
- 1.2.8. Jalapeno poppers
- 1.2.9. Asparagus

### 1.3. "What do You need here to cook on this space?" / "Que necesita para cocinar en este espacio?"

- 1.3.1. Benches
- 1.3.2. Picnic Tables
- 1.3.3. Chairs
- 1.3.4. Water fountains/source - 4
- 1.3.5. Vegetable Garden
- 1.3.6. Concession stand

- 1.3.7. Park grills - 4
  - 1.3.7.1. "Concrete grill"
- 1.3.8. Fire pit - 2
- 1.3.9. Trash can(s), etc

## 2. Performance

### 2.1. "What would You want to Perform here?" / "Que tipo de show te gustaria ver aqui?"

- 2.1.1. Singing - 3

### 2.2. "What kinds of Music do You play Outside?" / "Que tipo de musica te gustaria escuchar aqui?"

- 2.2.1. Pop music 3
- 2.2.2. La musica Ranchera sobre todo los corridos
- 2.2.3. Tango Music
- 2.2.4. Piano 2
- 2.2.5. Hip hop
- 2.2.6. R&B oldies
- 2.2.7. Acoustic music
- 2.2.8. Acapella singing
- 2.2.9. Specific Artists: Sebastian Yatra; CNCO; Shawn Mendez; Luis Fonzi; Ed Shereen

### 2.3. "Would You put a Stage here? What would happen there?" / "Te gustaria poner un escenario aqui?" "Que te gustaria que pasara en el escenario?"

- 2.3.1. Maybe not a stage, but just benches (concerned about flooding)
- 2.3.2. Movies in the park
- 2.3.3. Picnics (as long as no mosquitoes)
- 2.3.4. Playing Games
- 2.3.5. Bilingual Piano Classes
- 2.3.6. Community Karaoke 3
- 2.3.7. Poetry (Open Mic)
- 2.3.8. Plays 3
- 2.3.9. Puppet Shows
- 2.3.10. Concerts
- 2.3.11. Dancing
- 2.3.12. Youth Talent Show

## 3. Play

### 3.1. "Where on this Space would You Play?" / "Donde jugarias en este lugar?"

- 3.1.1. Basketball court on fenced lot - 3

### 3.2. "What do You want to Play here?"

- 3.2.1. "Put mulch on the ground before we fall in the holes!"
- 3.2.2. Community center (with

- play and learning spaces)
- 3.2.3. A place for parents and kids to learn (English, tutoring), while kids play
- 3.2.4. Tag - 2
- 3.2.5. Horse shoe - 3
- 3.2.6. Croquet
- 3.2.7. Soccer - 4
- 3.2.8. Stuck in the mud
- 3.2.9. Hide and seek
- 3.2.10. Field day
- 3.2.11. Bat mitten
- 3.2.12. Volleyball

### 3.3. "What would a Playground look like here?" / "Como seria un playground para este lugar?"

- 3.3.1. Swing set - 4
- 3.3.2. Sandbox - 2
- 3.3.3. Slides - 4
- 3.3.4. Seasaw
- 3.3.5. Maze - 3
- 3.3.6. "Not sure where to put playground. Does the area flood a lot? The ditch gets in the way."
- 3.3.7. Baby Playground and Big Kids Playground
- 3.3.8. Toy Car
- 3.3.9. Walking rail



## RESPONSES BY THEME

### 4. Water/Landscaping

4.1. "How could We make the Water a part of this Place?" / "Como podriamos hacer que el aqua sea parte de este lugar?"

- 4.1.1. Make it like a water park
- 4.1.2. Fountain
- 4.1.3. Water slide
- 4.1.4. Add flowers, fish (2), and clean water
- 4.1.5. Salamanders
- 4.1.6. Lazy river
- 4.1.7. Use aquarium 'river' as model
- 4.1.8. Splash 'pool' - pets welcome
- 4.1.9. Sailboats
- 4.1.10. Screen dividers to keep water flow
- 4.1.11. Put creek below ground-just partly uncovered
- 4.1.12.

4.2. "What could We do with the creek to make it Safe? Fun? Beautiful?" / "Que podemos hacer con el viachuelo para que sea seguro? Lindo? divertido?"

- 4.2.1. Bridge - 2
- 4.2.2. Place decorations at the edge with flowers
- 4.2.3. Cut the grass

- 4.2.4. Add solar lights
- 4.2.5. "Make it more obvious so nobody falls in"
- 4.2.6. "We need better drainage, this whole park floods"
- 4.2.7. Floor/High water engineering
- 4.2.8. Oxbow [lake]
- 4.2.9. "Gopher holes need to be filled, or gophers eradicated"
- 4.2.10. "Clear drainage, build it up and seal"
- 4.2.11. Decorations in the trees like little lights
- 4.2.12. Beautiful Bridge
- 4.2.13. Dragon-inspired design with water
- 4.2.14. Play house

4.3. "Could You see a Garden here? What might it look like?" / "Ves un jardin aqui? Como se vevia?"

- 4.3.1. Community Garden with irrigation from the creek
- 4.3.2. Community Vegetable Garden
- 4.3.3. Flowers
- 4.3.4. Sunflowers, roses
- 4.3.5. Garden with raised beds if possible
- 4.3.6. Maybe fruit trees

### 5. Safety

5.1. "What would make this place Safe for You? For kids?" / "Como podriamos hacer este espacio seguro para ti y tu familia?"

- 5.1.1. Remove ditch or put lights around the ditch so it's noticable
- 5.1.2. Lights around creek/ditch
- 5.1.3. Better lighting - 3
- 5.1.4. Indication of water way
- 5.1.5. Walkway around the water
- 5.1.6. Lawn maintenance
- 5.1.7. Trash bins
- 5.1.8. "Bridge over canal" - 2
- 5.1.9. "No more canal"
- 5.1.10. "Cover up the canal, but have water flow underneath"
- 5.1.11. Cover up holes
- 5.1.12. Caution signs
- 5.1.13. "Get rid of sticks in the area"

5.2. "What do these streets need to be safe for You?" / "Que necesitan las calles para ser seguras?"

- 5.2.1. Speed bumps -3
- 5.2.2. More lights -3
- 5.2.3. Police patrol more often
- 5.2.4. "Better police controlling"
- 5.2.5.

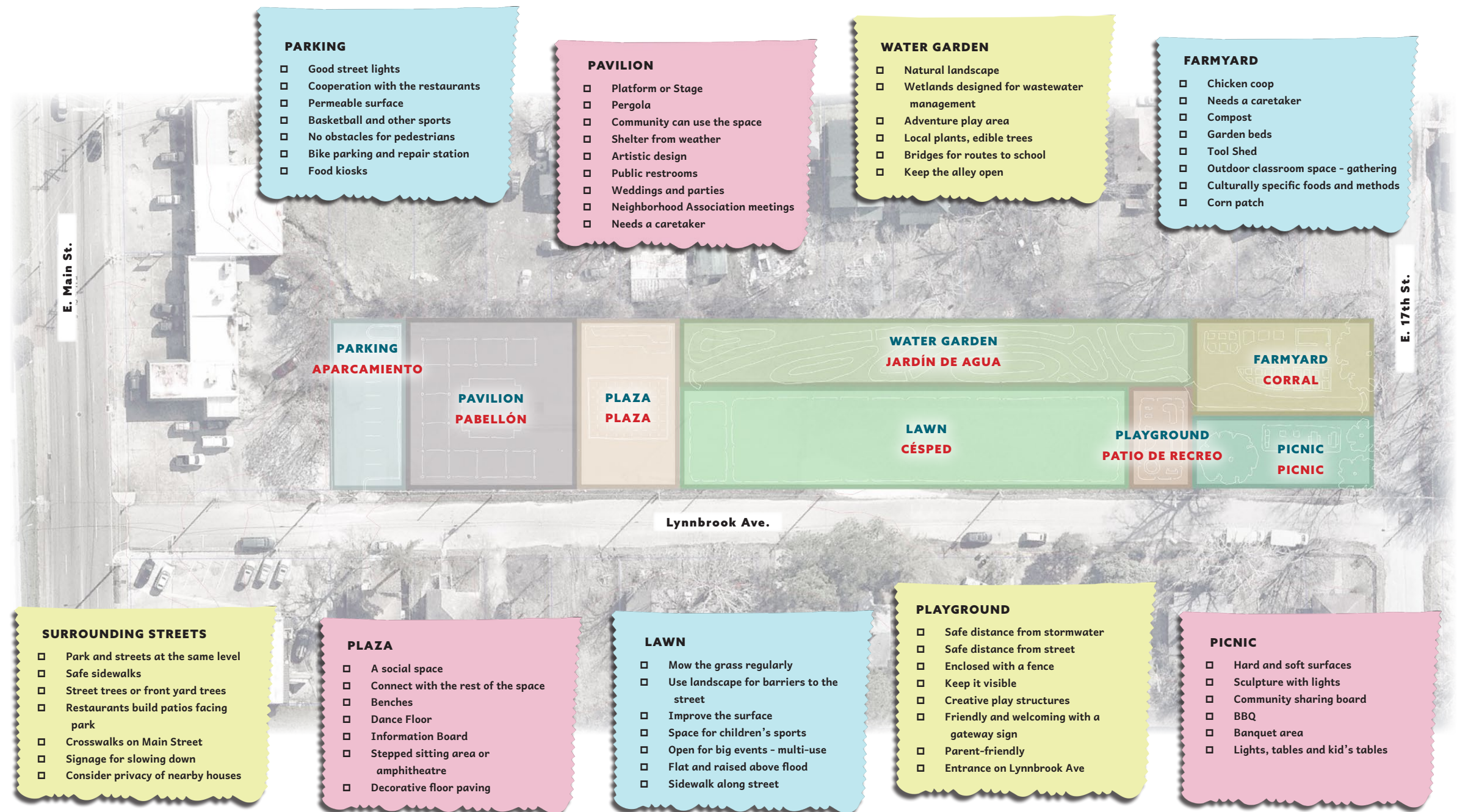
5.3. "What would make this a Safe Place when it's a Park?"

- 5.3.1. Camaras de seguridad - 2
- 5.3.2. Security Guard - 2
- 5.3.3. Lights
- 5.3.4. Fence -2
- 5.3.5. Cover up playgrounds for winter/rain
- 5.3.6. Restroom
- 5.3.7. "Definitely a park/ playground with swing and slide, a few more lights, but don't cut down trees"
- 5.3.8. Gate - 2
- 5.3.9. Swings
- 5.3.10. Playground
- 5.3.11.

### 6. Miscellaneous:

- 6.1. Preserve the trees





# ZONES AND OPPORTUNITIES





The design inspired and informed by our engagement process envisions the potential of the park's key elements (i.e., plaza, rain garden, lawn, etc) through the context of activities, functional relationships, and design factors. Throughout our process, our team has listened and discussed these concepts with the community and

amongst ourselves in a brainstorming and design session facilitated by our design team. The design presents the aspirations for interaction in every part of the park space, while addressing the dynamics and functionality of rain and water throughout the park.





### **Surrounding Streets**

Park and streets in the same level  
Open space  
Safe sidewalks  
Street trees or front yard trees  
Main Street crosswalks  
Signage for slowing down ("Children At Play" etc.)  
"Barrier" needed for nearby houses for privacy?  
Sidewalks - crossings - approaches  
Trees and beautification budget  
Signage

### **Restaurants**

San Marcos and Armandos - could have an outdoor setting - tables and chairs and/or a "carrito" kiosk open to the park

### **Parking**

Good street lights  
Good intentions with restaurants  
Permeable surface

Lot possibly doubles for parking and a basketball or sports court  
Avoid obstruction of walkability  
Bike parking and tool rack/station  
Talk with the owner of Armando's and San Marcos  
Food kiosk

### **Pavilion Site**

Platform/Stage  
Community Gathering Structure - open reservation "honor system"  
Shelter/structure from weather/elements  
Sculptural shade  
How do public restrooms work here?  
Weddings/parties  
Neighborhood Association meetings  
Someone keeps the keys  
Pergola - logo of San Marcos has a pergola in it  
Start as open with roof  
No barriers to use

### **Plaza**

Encounter area  
Connect with the rest of the space  
Benches  
Pergola  
Information Board/Wall  
Stepped sitting area/amphitheatre  
Nice floor paving - decorative  
Social hub - walkways

### **Water Garden**

Natural landscape  
Adventure - creative swings/gateways and doorways  
Wetlands - landscape design, wastewater management  
Plants  
Bridges - crossing to/from school  
Some everyday stormwater goes into a pipe, not above ground  
Keep the alley open? Follow the footprint of the neighbor  
Edible trees  
Kids walking through



# DESIGN CONCEPTS BY ZONE

## Lawn

- Scheduled mowing rotation
- Landscape for barriers/child safety
- Holes leveled for running safety
- Space for field-oriented sports - tag football, soccer, wiffle ball, etc.
- Landscaping?
- Open for big events - multi-use
- Flat and raised above flood
- Sidewalk along street

## Playground

- Safe distance from stormwater system/structure
- Safe distance from street
- Maybe enclosed with a fence to keep safe distance from street
- Bushes? Short and dense - keep it visible
- Creative equipment - tires buried - climbing dome - tree swings
- Insurance policy/coverage?
- Friendly and welcoming with a sign
- Parent friendly
- Playground entrance on Lynnbrook Ave
- Fenced

## Farmyard

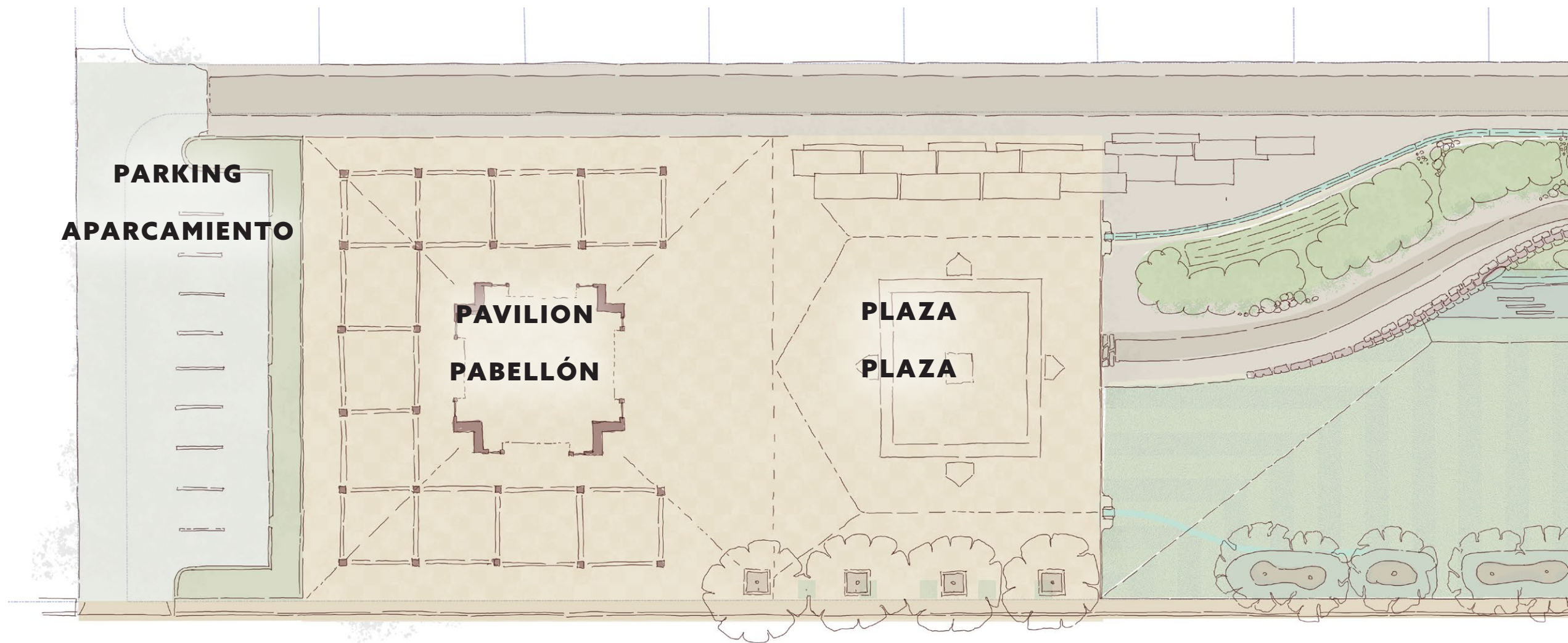
- Coop - caretaker - egg collection and share - barrier for predators
- Fertilization collection/compost
- Feed and Compost scraps - "How To" posted
- Garden space - sunlight and away from tree roots
- Tool Shed
- Outdoor classroom space - gathering point
- Culturally specific plants/methods
- Self-maintain
- Just corn?

## Picnic

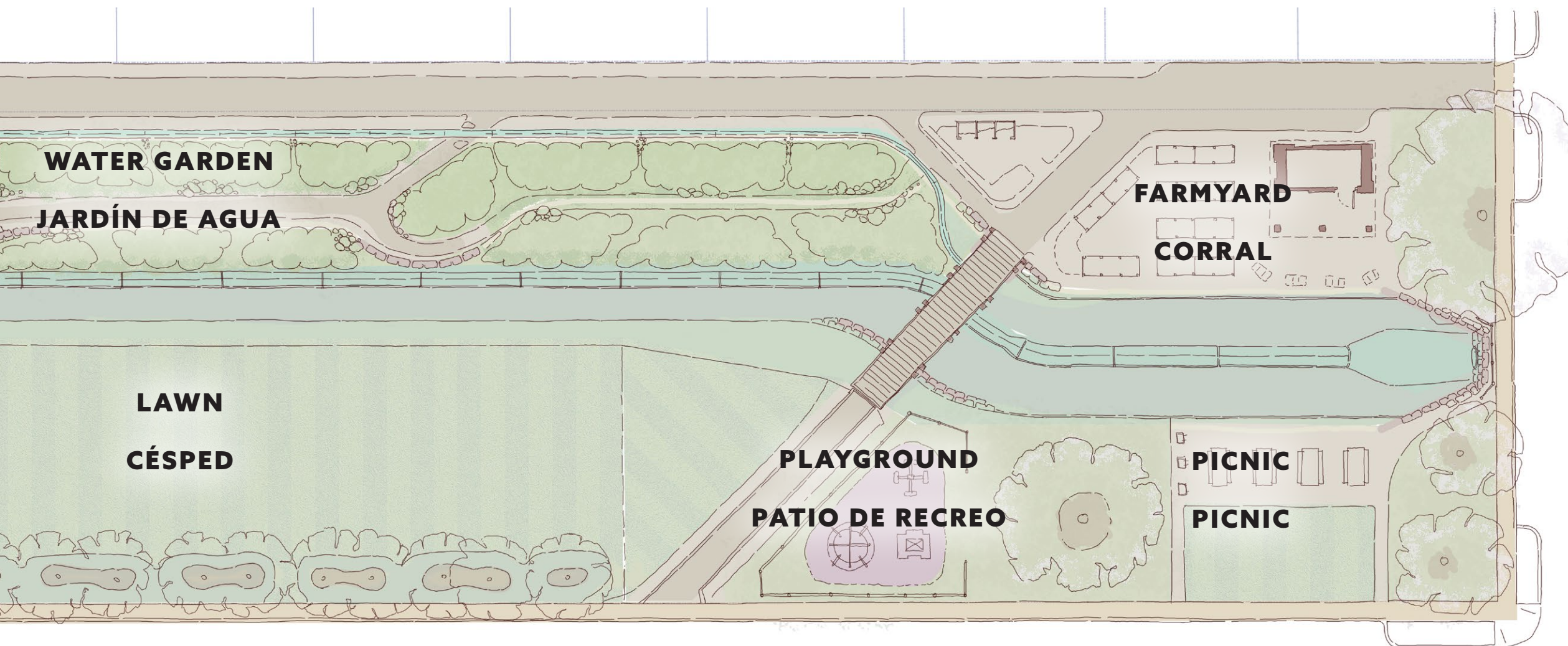
- Hard and soft surfaces
- Sculpture with lights
- Community sharing board
- BBQ
- Banquet area
- Lights, tables, kids tables











## ***PARK CONCEPT PLAN***





## Activities

visitor parking  
Art/ Food Fair overflow  
food trucks  
hardscape sports

## Functional relationships

Can offer cooperative parking to nearby restaurants  
Can be roped off for pedestrian use, expanding plaza size  
Can be developed cooperatively with restaurant parking on other side of alley  
Visitors can park on street if parking lot is in use.

## Design Factors

Parking lot uses city alley right-of-way for access lane.  
Planting area creates barrier between plaza area and parked cars.  
Parking lot stormwater should drain into planter, with appropriate choices of plantings and soils.  
Shade trees in planting strip.  
Provide access to long alley through parking lot.

***PARKING***



## Activities

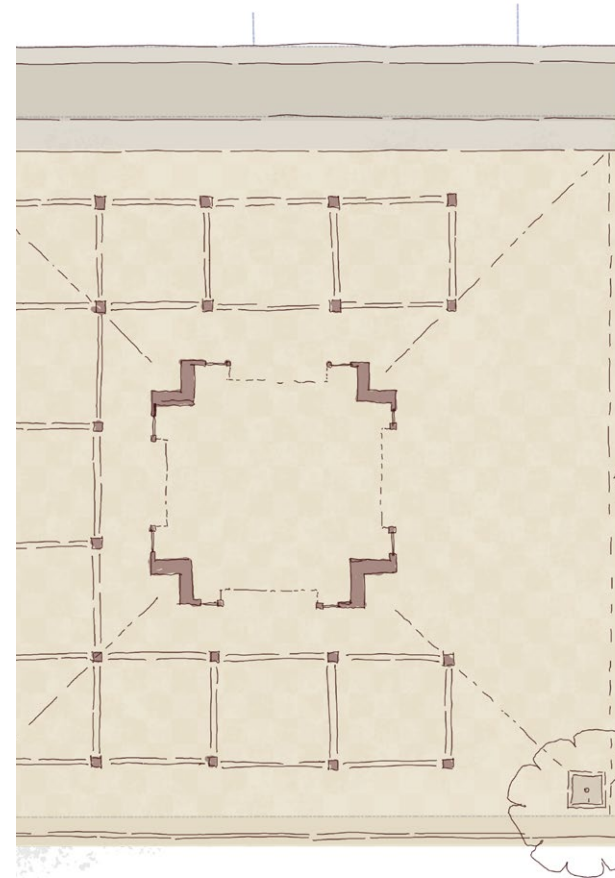
- Arts/Food Fairs
- Family/ Wedding/ Quinceanera celebrations
- Informal social interactions
- Picnic
- Classes

## Functional relationships

- Musicians can use pavilion for shelter/stage for larger events in the plaza
- Food trucks can set up in the parking lot

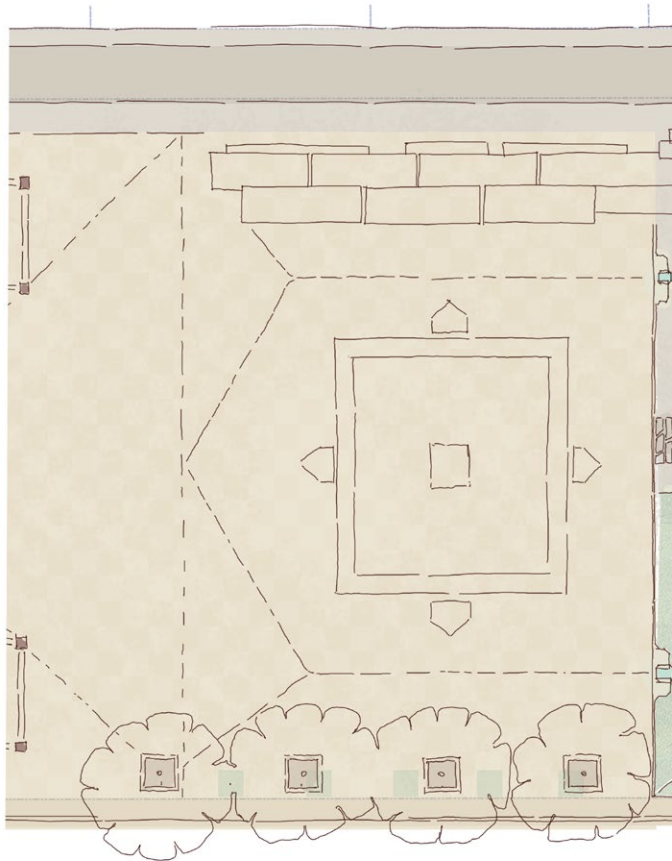
## Design Factors

- Any architecture should include a mix of shade structures/ arcades/ pergolas and enclosed pavilions with glass and operable walls, to maximise security.
- Pavilion should lock after daylight /event hours.
- Should include chairs and tables: allow the chairs to be moved around freely during the day.
- On-line scheduling/ reservation of pavilion.
- Pavilion area is mostly hardscape and drains away from structure. Structure designed for rapid recovery from flooding.
- Water and power supplied; no public restrooms. Use portables at events.



**PAVILION**





### Activities

- Dance area
- Music and other performances
- Fairs and other large events
- Some hardscape sports/ games

### Functional relationships

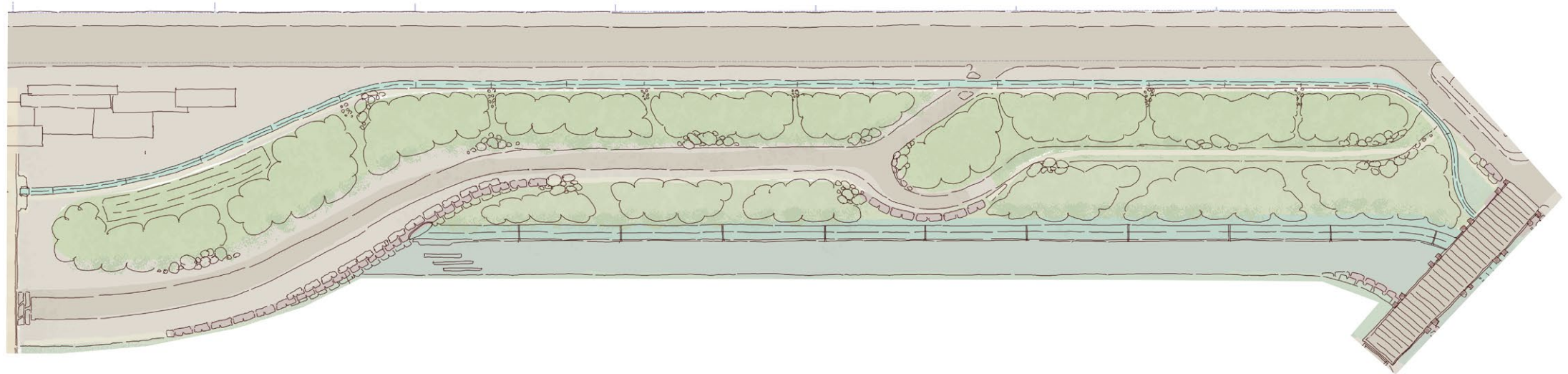
- Major events can span parking, pavilion and plaza.
- Loading and unloading from street or from long alley
- Direct access to Lawn and Rain Garden

### Design Factors

- Trees in raised planter boxes create barrier between street and plaza.
- Sit/play structure provides audience seating at back of plaza.
- Plaza drains to Rain Garden irrigation channel.

**PLAZA**





### Activities

Children's adventure/ discovery experience  
 Recreational walk paths  
 Flower and local species cultivation  
 Water conservation and management teaching garden

### Functional relationships

Slows and utilizes stormwater from plaza and

pavilion areas.

Reduces duration of flooding in the Lawn.  
 Creates landscaped backdrop and buffer between Lawn activities and adjacent residences.  
 Plant materials contribute to composting in Farmyard.

### Design Factors

Garden is divided into two terraces, with a walking path in between.

Plaza runoff runs in small irrigation channel along high side of rain garden, trickling into planting areas along the length of the garden.

Channelized storm drainage runs under plaza, emerges out of berm wall at low side of Rain Garden.

Use of natural boulders to form slopes.

## RAIN GARDEN



## Activities

Un-programmed outdoor space  
Children's running sports  
Blanket picnic

Diagonal path with scenic bridge connects to Farmyard and neighborhood streets to the south

can flood in extreme weather events.  
No drops or barrier between lawn and floodway; floodway is also planted in grass.

## Functional relationships

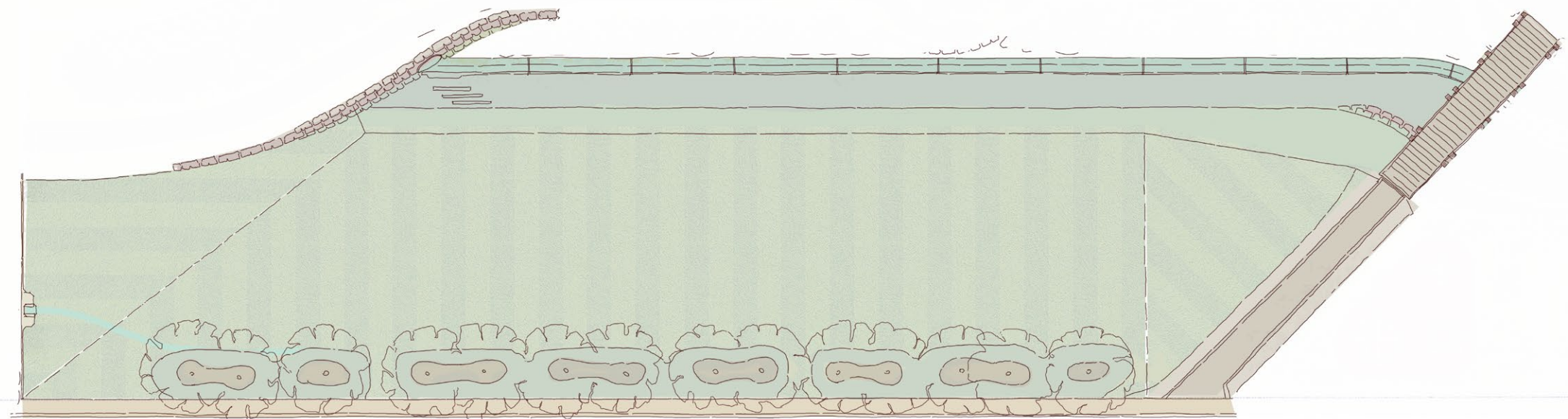
Event spill-over from Plaza  
Adjacent to playground for young families

## Design Factors

Landscaped berms provide barrier between street traffic and play areas.

Re-alignment of water course allows for expanded lawn area.

Lawn slopes slightly toward floodway and



**LAWN**



### Activities

Supervised toddler/ small child play

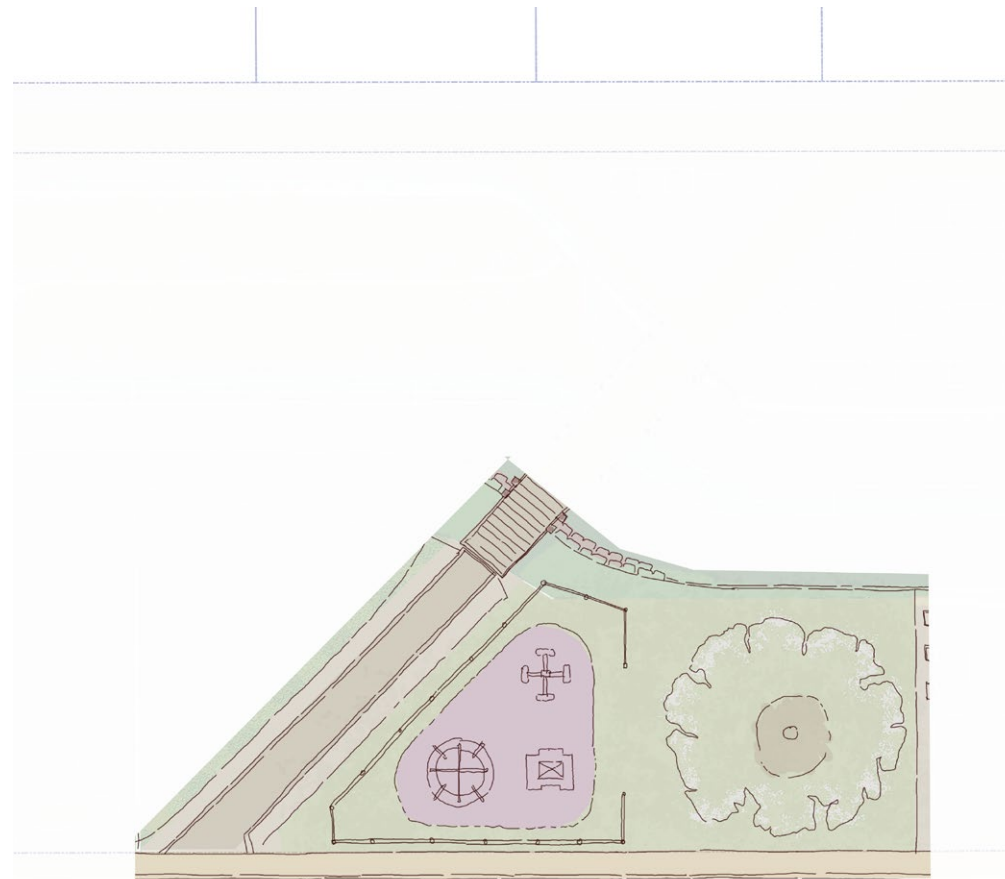
### Functional relationships

Adjoining family picnic area and Lawn

### Design Factors

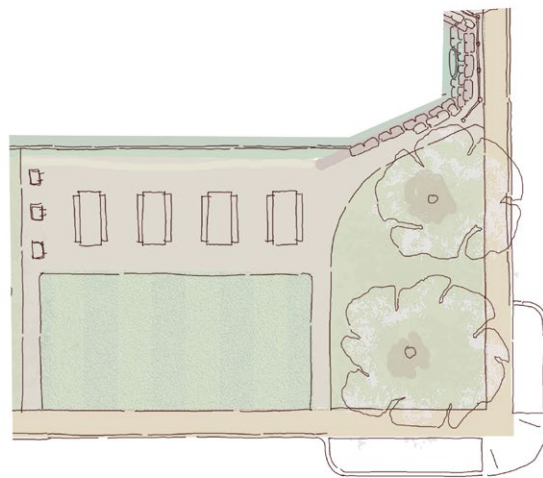
Partial enclosure with low fence protects children from street, path, and water.

Use recycled rubber play surface.



***PLAYGROUND***





### Activities

Picnic and barbeque  
Extended family events

### Functional relationships

Shade from existing trees.  
Brings activity to far end of linear park.  
Line of sight access to playground

### Design Factors

Large existing trees limit changes to grading and elevation.  
Provide fixed barbeques and picnic tables with fixed seating.  
Provide boardwalk or hardscape platform under picnic table area.

## ***PICNIC CORNER***



## Activities

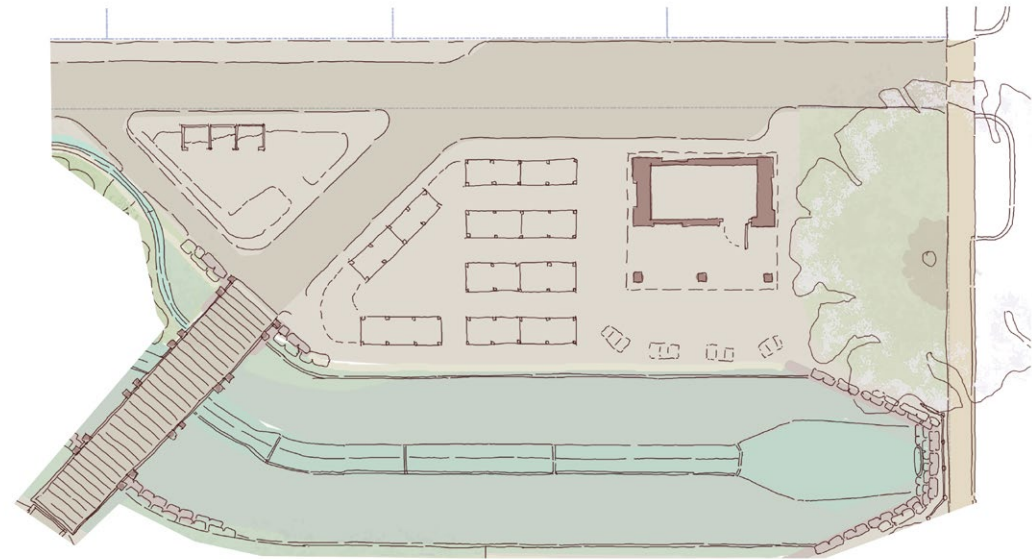
- Community gardens and raised beds
- Gardening education
- Conservation/ recycling/ composting education

## Functional relationships

- Adjacent to children's discover experiences in Rain Garden.
- Park maintenance and composting activities farthest from public event spaces.
- Brings activity to far end of linear park.

## Design Factors

- Large existing tree limits changes to grading and elevation.
- Gardening shed with covered porch can serve park volunteers and outdoor classes.
- Raised and/or fenced beds protect crop plants and isolate growing soils from any soil or groundwater safety issues.
- Supply water and power.
- Widen floodway in this location to eliminate or minimize wall barriers and hazards.
- Widen this portion of alley for service truck access/ parking.



**FARMYARD**



**FIESTA**  
**LYNNBROOK**

**FAMILY EVENT**  
*Everyone Welcome*

**MUSIC – FREE FOOD**  
**HOT CHOCOLATE**

Saturday, February 2nd  
Hours: 3 pm – 6 pm

Corner of 17th St and Lynnbrook Ave



**EVENTO FAMILIAR**  
**TODOS BIENVENIDOS**

**MÚSICA - TAMALES GRATIS**  
**CHOCOLATE CALIENTE**

Sábado 2 de febrero  
3pm - 6pm

Esquina de 17th St y Lynnbrook Ave  
**AMIGOS DEL PARQUE LYNNBROOK**

**THIS**  
**IS THE**  
**PLACE**

**EL LUGAR**  
**PARA**  
**ESTAR**

**WHERE**  
**WE**  
**DANCE**

**JUEGOS**  
**PARA**  
**NIÑOS**

**MUSIC**  
**FREE**  
**TAMALES**  
**HOT**  
**CHOCOLATE**



**EVENTO FAMILIAR**  
**TODOS BIENVENIDOS**

**MÚSICA - TAMALES GRATIS**  
**CHOCOLATE CALIENTE**

Sábado 2 de febrero  
3pm - 6pm

Esquina de 17th St y Lynnbrook Ave  
**AMIGOS DEL PARQUE LYNNBROOK**

**ESPACIO**  
**SOCIAL**  
**DULCE**

**ESTE**  
**ES EL**  
**LUGAR**

**THE**  
**PLACE**  
**TO BE**

**DÓNDE**  
**BAILA-**  
**MOS**

**WHERE**  
**KIDS**  
**PLAY**

**FIESTA**  
**LYNNBROOK**

**EVENTO FAMILIAR**  
**TODOS BIENVENIDOS**

**MÚSICA – TAMALES GRATIS**  
**CHOCOLATE CALIENTE**

Sábado 2 de febrero  
3 pm – 6 pm

Esquina de 17th St y Lynnbrook Ave



**EVENTO FAMILIAR**  
**TODOS BIENVENIDOS**

**MÚSICA - TAMALES GRATIS**  
**CHOCOLATE CALIENTE**

Sábado 2 de febrero  
3pm - 6pm

Esquina de 17th St y Lynnbrook Ave  
**AMIGOS DEL PARQUE LYNNBROOK**



**FAMILY EVENT**  
**EVERYONE WELCOME**

**MUSIC - FREE FOOD**  
**HOT CHOCOLATE**

Saturday, February 2nd  
Hours: 3pm - 6pm

Corner of 17th St and Lynnbrook Ave  
**FRIENDS OF LYNNBROOK PARK**



**EVENTO FAMILIAR**  
**TODOS BIENVENIDOS**

**MÚSICA - TAMALES GRATIS**  
**CHOCOLATE CALIENTE**

Sábado 2 de febrero  
3pm - 6pm

Esquina de 17th St y Lynnbrook Ave  
**AMIGOS DEL PARQUE LYNNBROOK**



**FAMILY EVENT**  
**EVERYONE WELCOME**

**MUSIC - FREE FOOD**  
**HOT CHOCOLATE**

Saturday, February 2nd  
Hours: 3pm - 6pm

Corner of 17th St and Lynnbrook Ave  
**FRIENDS OF LYNNBROOK PARK**



**EVENTO FAMILIAR**  
**TODOS BIENVENIDOS**

**MÚSICA - TAMALES GRATIS**  
**CHOCOLATE CALIENTE**

Sábado 2 de febrero  
3pm - 6pm

Esquina de 17th St y Lynnbrook Ave  
**AMIGOS DEL PARQUE LYNNBROOK**



**FAMILY EVENT**  
**EVERYONE WELCOME**

**MUSIC - FREE FOOD**  
**HOT CHOCOLATE**

Saturday, February 2nd  
Hours: 3pm - 6pm

Corner of 17th St and Lynnbrook Ave  
**FRIENDS OF LYNNBROOK PARK**



**EVENTO FAMILIAR**  
**TODOS BIENVENIDOS**

**MÚSICA - TAMALES GRATIS**  
**CHOCOLATE CALIENTE**

Sábado 2 de febrero  
3pm - 6pm

Esquina de 17th St y Lynnbrook Ave  
**AMIGOS DEL PARQUE LYNNBROOK**

Fliers promoting the creation of the “Friends of Lynnbrook Park”